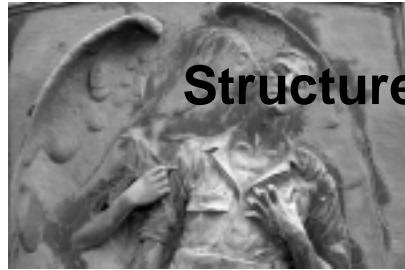


Building of Remembrance



Structure . . .



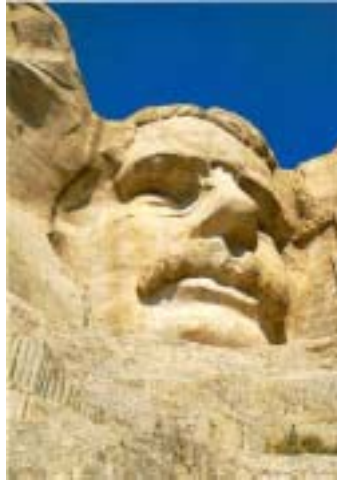
. . . or statement

Individuals need physical references and other people's testimony in order to validate their own experiences and accuracy.

“The experience and memory of humankind are laid down in layers in the physical environment, concretely and graphically. Every new part exploits ancient forms, materials, and way of making. Building is, at base, a sign of hope, a sign of society's belief in future, a gesture forward in time.”

--Aldo Rossi

Building of Remembrance



Commemoration has spun out of control, as we promote ourselves rather than remember our history.

Memorials no longer represent a nation united, but one divided.

We need to step back from our current rush to memorialize in order to be more selective in determining who, what, where, and how we remember.

From box to Memorial

Concepts

• Contrast

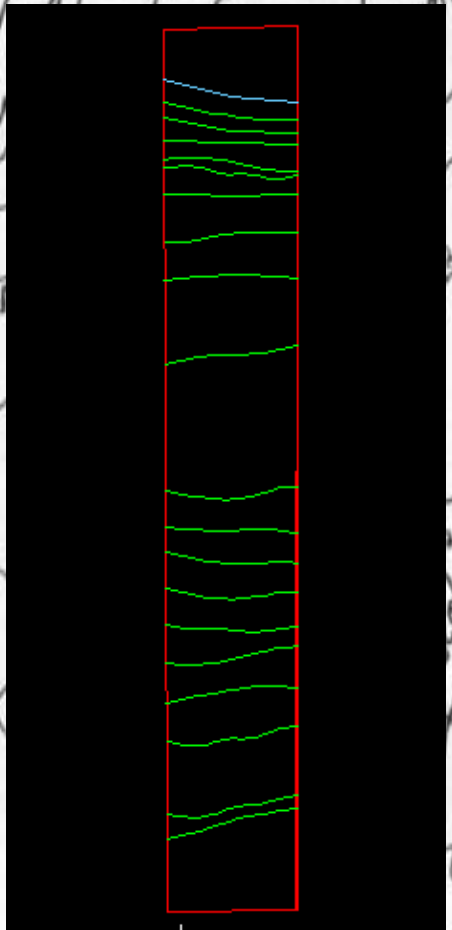
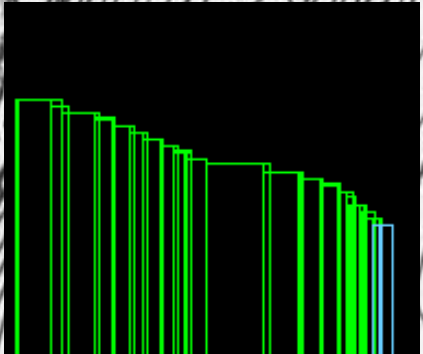
- **contrast: 1.** In display systems, the relation between the [intensity](#) of color or [brightness](#) of an area occupied by an element or an [image](#) and the intensity of the area not occupied by that element or image. *Deprecated synonym* **brightness ratio**.
- **2.** In [optical character recognition](#), the difference between color or shading of the printed material on a document and the [background](#) on which it is printed.
- **3.** In display systems, the extent to which the various luminance values in a [picture](#) are mapped to very dark and very light values. Note: A high-contrast picture is dominated by black and white and few values between. A low-contrast picture has many middle tones without many very dark or very light areas.

• Transition

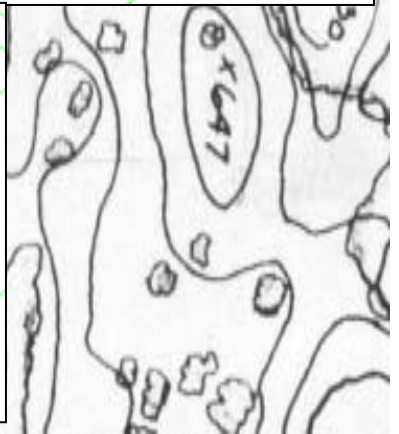
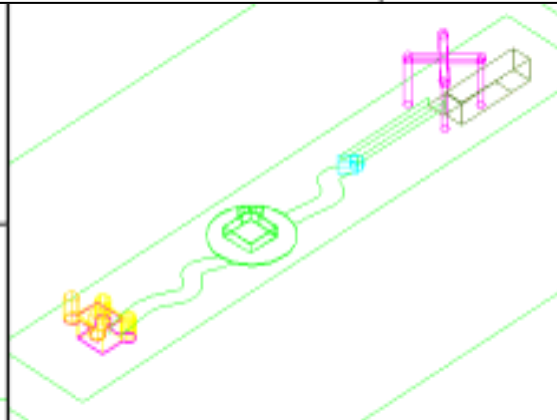
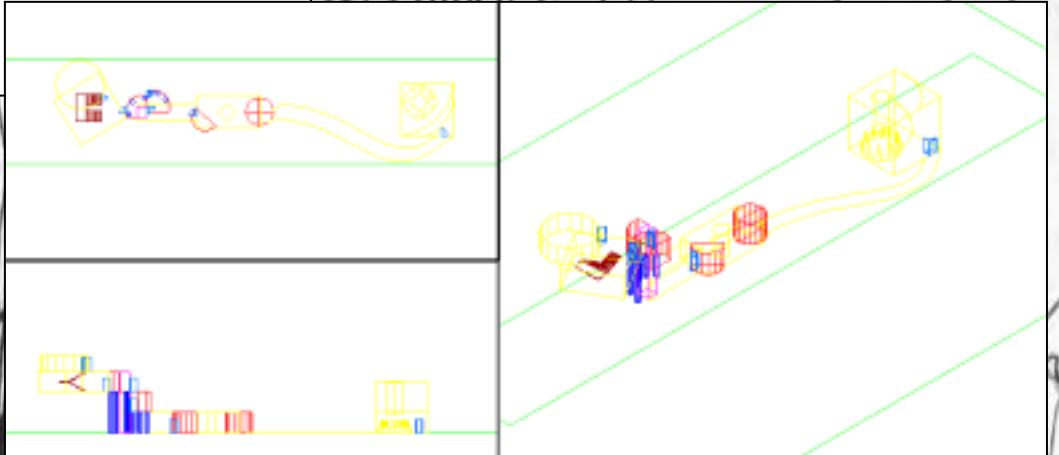
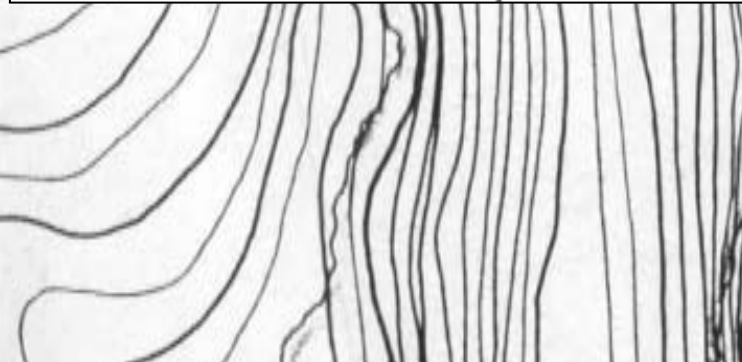
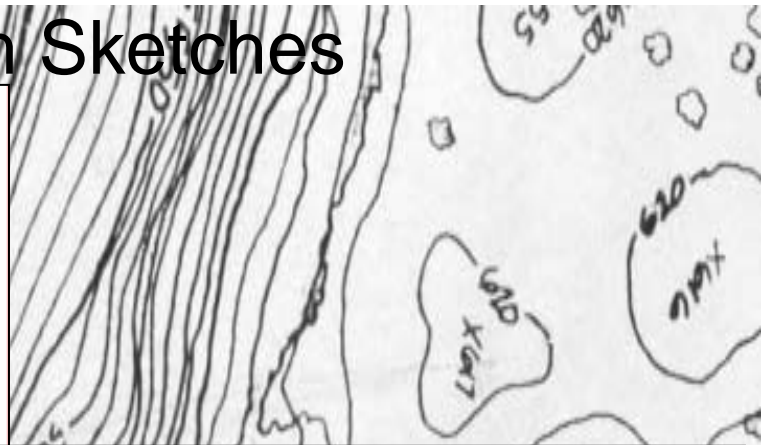
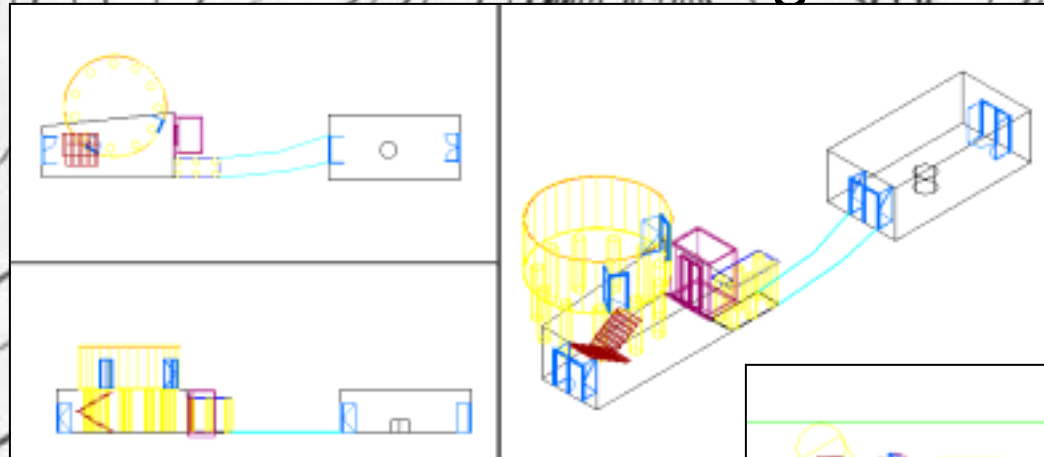
- **transition**, meaning "passage from one form, state, style, season or place to another."

Transition means change and there will always be some things that need to be left behind when change comes.

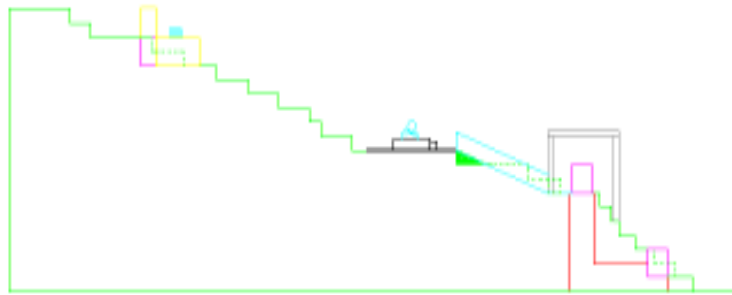
Kentucky Site



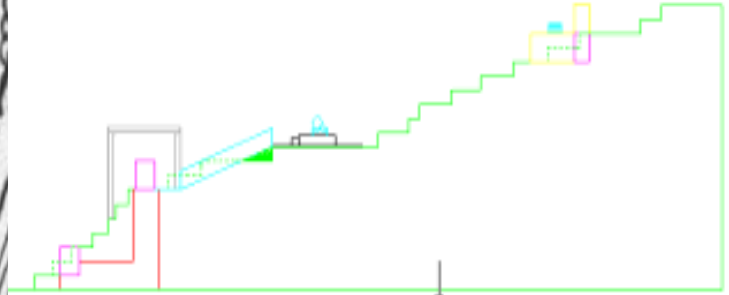
Initial Designs from Sketches



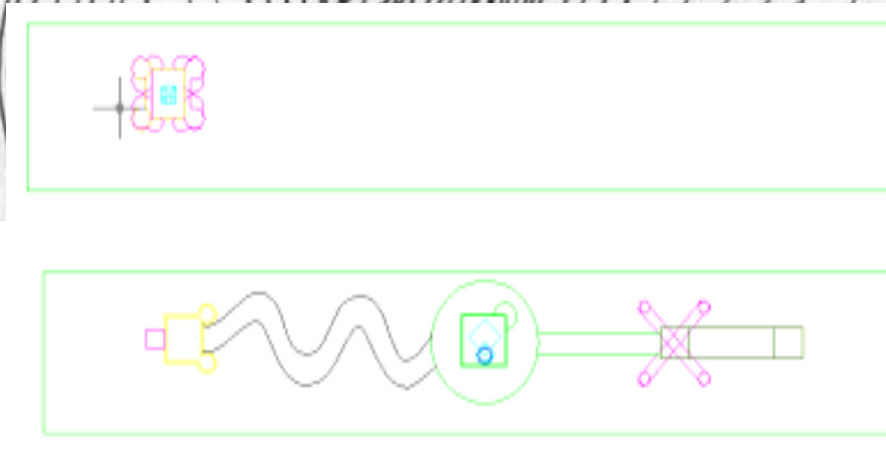
Final Design



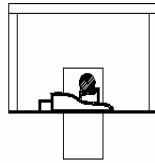
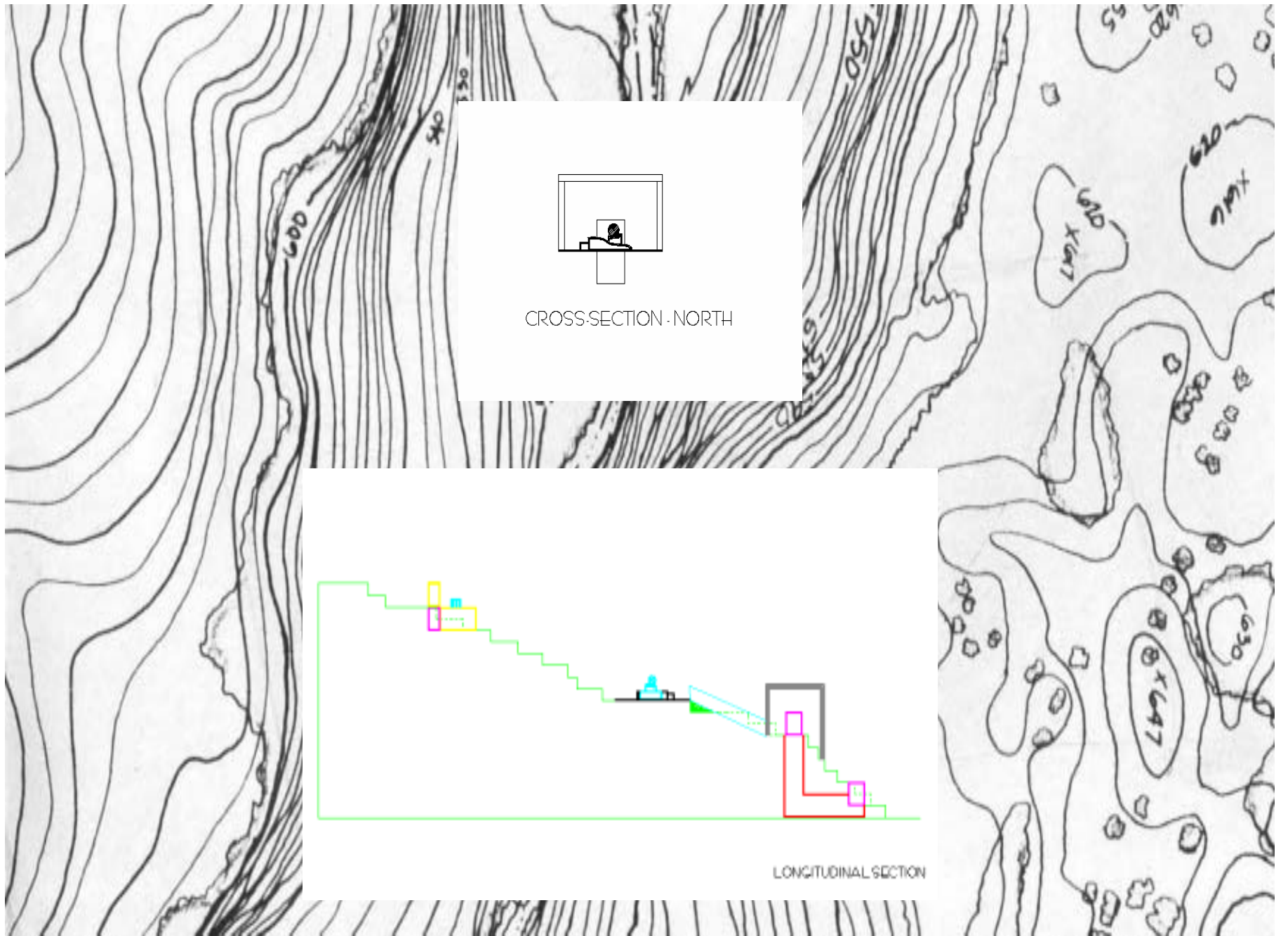
EAST ELEVATION



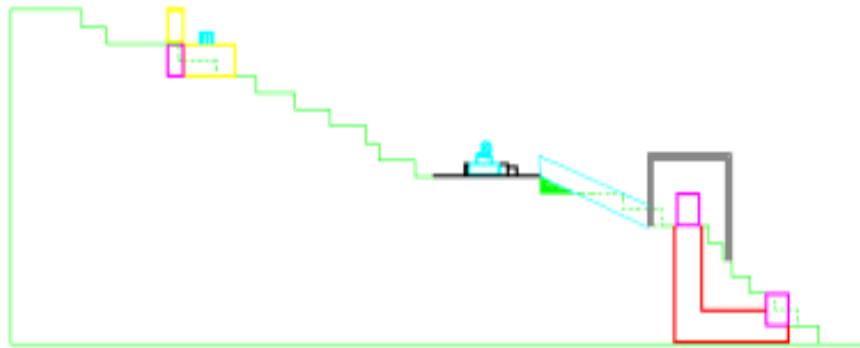
WEST ELEVATION



PLANS



CROSS-SECTION - NORTH



LONGITUDINAL SECTION